

Biological Indicators

2018 Product List



 **MesaLabs**

625 Zoot Way, Bozeman, MT 59718

10 Evergreen Drive, Bozeman, MT 59715

Phone: 406.585.9535 – 877.746.8883, Fax: 1.406.585.9219

www.mesalabs.com - bicustomerservice@mesalabs.com

All products manufactured by Mesa Labs are done so in accordance with current Quality System Regulations of the United States Food and Drug Administration and meet the standards established by USP and ISO 11138. Mesa Labs' Quality System is registered to ISO 13485:2003 Standards. See "Mesa Labs Standard Terms and Conditions" at www.mesalabs.com/terms-conditions

Smart-Read EZTest - 510(k) Cleared

Product List

The Smart-Read® EZTest® Biological Monitoring System allows an organization to release sterile product with true biological confirmation faster and easier than ever before. This unique system uses a real biological indicator (BI) -- with no added enzyme or chemical integrator -- which is incubated, evaluated, and documented in one simple, automated operation. Relying only upon bacterial spore growth, the Smart-Read® system can detect sterilization failure in as few as three to five hours, and negative results can be confirmed with an additional five hours of incubation.

Item	Reorder Number	Population	ATCC Number	Package Configuration
Smart-Read EZTest <i>G. stearothermophilus</i>	SEZS/5	10x5	7953	100 count
	SEZS/525	10x5	7953	25 count
	SEZS/6	10x6	7953	100 count
	SEZS/625	10x6	7953	25 count
Smart-Read EZTest Steam Test Pack	SRSP/25	10x5	7953	25 test packs/case with 25 controls
	SRSP6/25	10x6	7953	25 test packs/case with 25 controls
Smart-Well Incubator Kit	SWI1710-1	U.S. Power		Includes Unit, Printer, Manual, & Power Pack
	SWI1710-3	European Power		Includes Unit, Printer, Manual, & Power Pack
	SWI1710-4	Australian Power		Includes Unit, Printer, Manual, & Power Pack
	SWI1710-5	U.K. Power		Includes Unit, Printer, Manual, & Power Pack



Smart-Read EZTest
15.0 mm x 48.9 mm



Smart-Well Incubator

Smart-Read Accessories

Item	Reorder Number	Package
Incubator Thermometer - Digital Keychain Thermometer	IDT2	1
Black Citizen Printer w/o Power Pack	PTR/BLK	1
EURO Power Pack for Printer	P4-1000	1
US Power Pack for Printer	P5-1000	1
P6 Power Pack for Smart Well Incubator (Interchangeable)	P6-1000	1
Printer Cable (RJ45 to DB25) Connects Printer and Smart Well Incubator	9142	1
Printer Ribbon/Paper Kit 1 Ink/2 Rolls	9503	1
Printer Paper Roll	PTR/PPR	2
Printer Ink	PTR/INK	1

Mesa Laboratories, Inc.

www.MesaLabs.com
BI-support@mesalabs.com
Effective January 15th, 2018
Rev. 04DEC2017

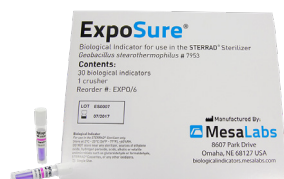
Place Orders at:

bicustomerservice@mesalabs.com
PH: 406.585.9535
FX: 406.585.9219

EZTest

Product List

Item	Reorder Number	Population	ATCC Number	Package Configuration
EZTest Steam <i>G. stearothermophilus</i> 510(k) Cleared	EZS/5	10x5	7953	100 count
	EZS/525	10x5	7953	25 count
	EZS/6	10x6	7953	100 count
	EZS/625	10x6	7953	25 count
EZTest Steam Test Pack <i>G. stearothermophilus</i> 510(k) Cleared	STP/25	10x5	7953	25 test packs/case with 25 controls
EZTest EO <i>B. atrophaeus</i> 510(k) Cleared	EZG/6	10x6	9372	100 count
	EZG/625	10x6	9372	25 count
EZTest H2O2 <i>G. stearothermophilus</i>	EZH/6	10x5	7953	100 count
EZTest Crusher	Crusher/ SGMWNL			1
Adjustable SCBI Incubator for EZTest	I1410	NA	NA	13 cavity
Power Pack	P6-1000	NA	NA	
Thermometer	IDT2	NA	NA	
Incubator Block Thermometer Bushing, 1410	9505-1410	NA	NA	



ExpoSure

EZTest
15.0 mm x 48.9 mm

EZTest Test Pack



11410

ExpoSure

ExpoSure™ is a biological indicator intended for use in the STERRAD® Sterilizer. ExpoSure has received its 510(k) making it suitable for healthcare and non-healthcare settings and usage. Its 24-hour incubation time and flexibility make it a powerful tool to help your facility maintain compliance and patient safety. ExpoSure can be used in conjunction with existing incubators out in the field (55-60 °C).

Item	Reorder Number	Population	ATCC Number	Package Configuration
ExpoSure <i>G. stearothermophilus</i> 510(k) Cleared	EXPO/6	10x6	7953	30 indicators per box; 1 crusher

Mesa Laboratories, Inc.

www.MesaLabs.com

BI-support@mesalabs.com

3

Effective January 15th, 2018
Rev. 04DEC2017

Place Orders at:

bicustomerservice@mesalabs.com

PH: 406.585.9535

FX: 406.585.9219

Ampoules for Sterilization of Liquids*

ProSpore Ampoule, MagnaAmp, and SterilAmp II are self-contained biological indicators for steam sterilization ideal for validating the sterilization of liquid loads. No activation is required. Simply expose the unit to the sterilization process and incubate afterwards. ProSpore Ampoule, MagnaAmp and SterilAmp II are validated for 48 hour reduced incubation. SterilAmp II 5230 is validated for 72 hour incubation.

Item	Reorder Number	Population	ATCC Number	Package Configuration
4 ml ProSpore 510(k) Cleared 14.75mm x 52mm	PS-4-10	10x4	7953	10 / Box
	PS-4-50	10x4	7953	50 / Box
	PS-5-10	10x5	7953	10 / Box
	PS-5-50	10x5	7953	50 / Box
	PS-6-50	10x6	7953	50 / Box
MagnaAmp <i>G. stearothermophilus</i> 10.6mm x 52mm	MA/4	10x4	7953	Box of 50 units plus 10 negative controls
	MA/5	10x5	7953	Box of 50 units plus 10 negative controls
	MA/6	10x6	7953	Box of 50 units plus 10 negative controls
	MANC	Negative Controls		Box of 10
SterilAmp II <i>G. stearothermophilus</i> 6.75mm x 26.5mm	SA/4	10x4	7953	Box of 100 units plus 10 negative controls
	SA/5	10x5	7953	Box of 100 units plus 10 negative controls
	SA/6	10x6	7953	Box of 100 units plus 10 negative controls
	SANC	Negative controls		Box of 10
SterilAmp II <i>G. stearothermophilus</i> 6.75mm x 17.5mm	SA18/6	10x6	7953	Box of 100 units plus 10 negative controls
	SA18/NC50	10x5	7953	Box of 100 units plus 50 negative controls
	SANC18	Negative controls		Box of 10
SterilAmp II 5230 <i>B. subtilis</i> "5230" Low Temp (110°C-118°C)	SASU/6	10x6	35021	Box of 100 units plus 10 negative controls
	SASUNC	Negative Controls		Box of 10
Incubator for ProSpore	I1480	NA	NA	11 cavity
Incubator for MagnaAmp	I1510	NA	NA	15 cavity
Incubator Block Thermometer Bushing, 1480	9505-1480	NA	NA	
Incubator Block Thermometer Bushing, 1510	9505-1510	NA	NA	
Power Pack for Incubators	P6-1000	NA	NA	
Thermometer	IDT2	NA	NA	

*ProSpore Ampoule, MagnaAmp and SterilAmp are refrigerated items and require overnight shipping.



I1480



I1510



SterilAmp II



SterilAmp II 5230



MagnaAmp



ProSpore Ampoule

Mesa Laboratories, Inc.

www.MesaLabs.com
BI-support@mesalabs.com

Place Orders at:

bicustomerservice@mesalabs.com
PH: 406.585.9535
FX: 406.585.9219

Ampoules

Ampoules

Media & Kits

Product List

Item	Reorder Number	Population	ATCC Number	Package Configuration
Releasat Biological Indicator Culturing Set for Gas	RG/100	10x6	9372	Box of 100 MESASTrips with 100 media tubes
DriAmp Biological Indicator Culturing Set with Releasat Media	DH/50	10x6	9372	Box of 50 DriAmp Ampoules with 50 Releasat media tubes
Tryptic Soy Broth w/ Bromocresol Purple and <i>G. stearothermophilus</i> for Peracetic Acid 6.5ml Fill Volume in 16mm x 100mm Tubes	C-3-6-1080P-PA	10x6	7953	25 Tubes TSB w/ 25 Spore Strips
Releasat Media for EO/Dry Heat/CIO2	RM/100	NA	NA	Box of 100 media tubes
Releasat Media for Steam 3.6ml Fill Volume in 16mm x 100 mm Tubes	PM/100	NA	NA	Box of 100 media tubes
Tryptic Soy Broth w/ Bromocresol Purple 6.5ml Fill Volume in 16mm x 100mm Tubes	TSB-BP16			100/pkg

Mesa Labs offers a complete line of spore strips for sterility testing in various environments for both healthcare and industrial applications. Mesa's products are manufactured in accordance with USP Guidelines and the US Food & Drug Administration's Quality System Regulations.

MESASTrip Dimensions: Strip 1.0 in x 0.25 in, Glassine Envelope 2.875 in x 1.056 in

Item	Reorder Number	Population	ATCC Number	Package Configuration
MESASTrip for Steam <i>G. stearothermophilus</i>	SGMS/3	10x3	7953	Box of 100
	SGMS/5	10x5	7953	Box of 100
	SGMS/6	10x6	7953	Box of 100
MESASTrip for EO/Dry Heat <i>B. atrophaeus</i>	SGMG/6	10x6	9372	Box of 100
MESASTrip for Steam (Low Temp) 5230 Subtilis	SGMSU/6	10x6	5230	Box of 100
MESASTrip for Radiation <i>B. pumilis</i>	SGMR/6	10x6	27142	Box of 100
MESASTrip - Chlorine Dioxide (In Tyvek/Mylar) <i>B. atrophaeus</i>	ACD/6	10x6	9372	Box of 100

Spore Strips FDA 510(k) Cleared Dimensions: Strip 1.5 in x 0.25 in, Glassine Envelope 2.75 in x 1.0 in

Item	Reorder Number	Population	ATCC Number	Package Configuration
Spore Strip for Steam <i>G. stearothermophilus</i>	3-1000	10x5	7953	1000 / Bag
	3-5100	10x5	7953	Box of 100
	3-6100	10x6	7953	Box of 100
Spore Strip for EO/Dry Heat <i>B. atrophaeus</i>	1-1000	10x6	9372	1000 / Bag
	1-6100	10x6	9372	Box of 100
	1-6500	10x6	9372	500 / Bag
Spore Strip Combined <i>B. atrophaeus</i> & <i>G. stearothermophilus</i>	5-1000	10x6 / 10x5	9372 & 7953	1000 / Bag
	5-5100	10x6 / 10x5	9372 & 7953	Box of 100

Mesa Laboratories, Inc.

www.MesaLabs.com
BI-support@mesalabs.com

Place Orders at:

bicustomerservice@mesalabs.com
PH: 406.585.9535
FX: 406.585.9219

Spore Suspensions

Item	Reorder Number	Population	ATCC Number	Package Configuration	Diluent
<i>Geobacillus stearothermophilus</i>	SSSE/4	10x4/0.1 ml	7953	10 ml vial	40% Ethanol
	SSSE/5	10x5/0.1 ml	7953	10 ml vial	40% Ethanol
	SSSE/6	10x6/0.1 ml	7953	10 ml vial	40% Ethanol
	SSSE/7	10x7/0.1 ml	7953	10 ml vial	40% Ethanol
	SSSA/7	10x7/0.1 ml	7953	10 ml vial	Aqueous
<i>Bacillus atrophaeus</i>	SSGE/4	10x4/0.1 ml	9372	10 ml vial	40% Ethanol
	SSGE/5	10x5/0.1 ml	9372	10 ml vial	40% Ethanol
	SSGE/6	10x6/0.1 ml	9372	10 ml vial	40% Ethanol
	SSGE/7	10x7/0.1 ml	9372	10 ml vial	40% Ethanol
	SSGE/8	10x8/0.1 ml	9372	10 ml vial	40% Ethanol
<i>Bacillus pumilis</i>	SSRE/4	10x4/0.1 ml	27142	10 ml vial	40% Ethanol
	SSRE/5	10x5/0.1 ml	27142	10 ml vial	40% Ethanol
	SSRE/6	10x6/0.1 ml	27142	10 ml vial	40% Ethanol
	SSRE/7	10x7/0.1 ml	27142	10 ml vial	40% Ethanol
	SSRE/8	10x8/0.1 ml	27142	10 ml vial	40% Ethanol
<i>Bacillus subtilis</i> "6633"	SS6633E/4	10x4/0.1 ml	6633	10 ml vial	40% Ethanol
	SS6633E/5	10x5/0.1 ml	6633	10 ml vial	40% Ethanol
	SS6633E/6	10x6/0.1 ml	6633	10 ml vial	40% Ethanol
	SS6633E/7	10x7/0.1 ml	6633	10 ml vial	40% Ethanol
	SS6633E/8	10x8/0.1 ml	6633	10 ml vial	40% Ethanol
	SS6633A/7	10x7/0.1 ml	6633	10 ml vial	Aqueous
<i>Bacillus subtilis</i> "5230"	SS5230E/4	10x4/0.1 ml	35021	10 ml vial	40% Ethanol
	SS5230E/5	10x5/0.1 ml	35021	10 ml vial	40% Ethanol
	SS5230E/6	10x6/0.1 ml	35021	10 ml vial	40% Ethanol
	SS5230E/7	10x7/0.1 ml	35021	10 ml vial	40% Ethanol
	SS5230E/8	10x8/0.1 ml	35021	10 ml vial	40% Ethanol
	SS5230A/7	10x7/0.1 ml	35021	10 ml vial	Aqueous



Suspensions

Spore Suspensions

Spore Suspensions

Standard PCD - Available in Quantities of 100

Manufacturer	Reorder Number	BI Type	Nominal D-Value
MESA	PCD2.1	BI Disc 1-10006mm	28
	PCD3.1	BI Disc 1-10006mm	
	PCD4.1	BI Disc 1-10006mm	21
	PCD5.1	BI Disc 1-10006mm	4
	PCD6.1	BI Disc 1-10006mm	12
	PCD7.1	BI Disc 1-10006mm	9
	PCD2.12	SGMG/6 strip w/out glassine	28
	PCD2.13	EZTest EZG/6 SCBI	58
	PCD3.13	EZTest EZG/6 SCBI	3
	PCD4.13	EZTest EZG/6 SCBI	50
	PCD5.13	EZTest EZG/6 SCBI	13
	PCD6.13	EZTest EZG/6 SCBI	35
	PCD7.13	EZTest EZG/6 SCBI	26
	PCD8.13	EZTest EZH/6 Hydrogen Peroxide	
	PCD4.19	A2X10/6G BI mini strip in glassine	32
	PCD2.5	SGMG/6 strip in glassine	37
	PCD3.5	SGMG/6 strip in glassine	4
	PCD4.5	SGMG/6 strip in glassine	32
	PCD5.5	SGMG/6 strip in glassine	6
	PCD6.5	SGMG/6 strip in glassine	17
PCD7.5	SGMG/6 strip in glassine	14	



PCD

PCD

Standard PCD - Available in Quantities of 100

Manufacturer	Reorder Number	BI Type	Nominal D-Value
Steris	PCD2.2	NA005 BI strip w/out glassine	28
	PCD3.2	NA005 BI strip w/out glassine	3
	PCD4.2	NA005 BI strip w/out glassine	21
	PCD5.2	NA005 BI strip w/out glassine	4
	PCD6.2	NA005 BI strip w/out glassine	12
	PCD7.2	NA005 BI strip w/out glassine	9
	PCD2.7	NA005 BI strip in glassine	37
	PCD4.7	NA005 BI strip in glassine	32
	PCD6.7	NA005 BI strip in glassine	17
	PCD7.7	NA005 BI strip in glassine	14
3M	PCD2.6	Attest 1264-S SCBI	58
	PCD3.6	Attest 1264-S SCBI	5
	PCD4.6	Attest 1264-S SCBI	50
	PCD5.62	Attest 1264-S SCBI	13
	PCD6.6	Attest 1264-S SCBI	35
	PCD7.6	Attest 1264-S SCBI	26
	PCD2.9	Attest 1294-S RRBI	58
	PCD3.9	Attest 1294-S RRBI	
	PCD4.9	Attest 1294-S RRBI	50
	PCD5.92	Attest 1294-S RRBI	13
	PCD6.9	Attest 1294-S RRBI	35
	PCD7.9	Attest 1294-S RRBI	26

Bare BI PCD

Manufacturer	Reorder Number	BI Type	Package Configuration
MESA	EZG/6	EZTest EZG/6 SCBI	100/pkg
	1-10006mm	BI Disc 1-10006mm	1000/pkg
Steris	PCD0.7	NA005 BI strip in glassine	500/pkg
3M	PCD0.6	Attest 1264-S SCBI	300/pkg
	PCD0.9	Attest 1294-S RRBI	300/pkg

Mesa Laboratories, Inc.

www.MesaLabs.com
BI-support@mesalabs.com

Effective January 15th, 2018
Rev. 04DEC2017

Place Orders at:

bicustomerservice@mesalabs.com
PH: 406.585.9535
FX: 406.585.9219

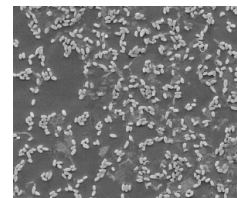
PCD

PCD

Apex

APEX Biological Indicator products are designed specifically for the pharmaceutical, food and medical device industries utilizing H₂O₂ capor sterilization. The stainless steel carrier is designed for use with today's isolator and filling line applications.

Item	Reorder Number	Population	ATCC Number	Package Configuration
Stainless Steel Discs in Tyvek/Tyvek <i>G. stearothermophilus</i>	HMV-091E3	10x3	12980	100/pkg
	HMV-091	10x6	12980	100/pkg
	KCD-404	10x4	12980	100/pkg
Bare Metal BI Stainless Steel Ribbon <i>G. stearothermophilus</i>	SBC-327	10x6	12980	100/pkg
Tri-Scale BI; Tyvek pkg BI w/ 10x6, 10x5, 10x4 Stainless Steel Carriers <i>G. stearothermophilus</i>	LOG-456	10x4, 10x5, 10x6	12980	50/pkg
Stainless Steel Discs in Tyvek/Tyvek <i>B. atrophaeus</i>	GRS-090E3	10x3	9372	100/pkg
	GRS-090	10x6	9372	100/pkg
Stainless Steel Discs in Tyvek/Tyvek <i>G. stearothermophilus</i>	NAS-152E3	10x3	7953	100/pkg
	NAS-152	10x6	7953	100/pkg
Sterile Tyvek Transfer Pockets for SBC-327	BMWK-750			100/pkg
Spore Suspension for gaseous hydrogen peroxide <i>G. stearothermophilus</i>	LAU-196	10x7/0.1 ml	12980	10 ml vial
	LPT-606	10x7/0.1 ml	7953	10 ml vial
Releasat Purple , for use with HMV-091, KCD-404 and LOG-456 3.6 Fill Volume in 16mm x 100mm Tubes	PM/100	--	--	100 units



Mesa Laboratories, Inc.

www.MesaLabs.com
BI-support@mesalabs.com

Effective January 15th, 2018
Rev. 04DEC2017

Place Orders at:

bicustomerservice@mesalabs.com
PH: 406.585.9535
FX: 406.585.9219

Industrial Use BIs / Culture Media

Product List

Item	Reorder Number	Population	ATCC Number	Package Configuration
Cotton Thread: 19mm x 1.5 mm <i>B. atrophaeus</i>	1-6100TT	10x6	9372	100/pkg in Tyvek/ Mylar
Polyester Suture: 5 cm Length x 0.15 Dia. <i>B. atrophaeus</i>	1-6100YT	10x6	9372	100/pkg in Tyvek/ Mylar
Polyester Suture: 5 cm Length x 0.15 Dia. <i>G. stearothermophilus</i>	3-6100YT	10x6	7953	100/pkg in Tyvek/ Mylar
Paper Discs: 6mm <i>B. atrophaeus</i>	1-10006mm	10x6	9372	1000/Bulk
Paper Discs: 6mm <i>G. stearothermophilus</i>	DS6R/6	10x6	7953	100/Bulk
Paper Discs: 9mm <i>B. atrophaeus</i>	1-1000PB	10x6	9372	1000/Bulk
Paper Discs: 9mm <i>G. stearothermophilus</i>	3-1000PB	10x5	7953	1000/Bulk
	3-6100PB	10x6	7953	1000/Bulk
Tryptic Soy Broth w/ Bromocresol Purple 6.5ml Fill Volume in 16mm x 100mm Tubes	TSB-BP16			100/pkg

ProLine PCD

ProLine is a Process Challenge Device (PCD) for use in the validation or monitoring of sterilization cycles of tubing ranging from 3.2mm to 15.8mm ID. ProLine contains a filter paper disc inoculated with bacterial spores of *G. stearothermophilus* for steam or *B. atrophaeus* for EO.

Item	Reorder Number	Population	ATCC Number	Package Configuration
<i>Geobacillus stearothermophilus</i>	PL-3-6-15	10x6	7953	15

Mesa Laboratories, Inc.

www.MesaLabs.com
BI-support@mesalabs.com

Effective January 15th, 2018
Rev. 04DEC2017

Place Orders at:

bicustomerservice@mesalabs.com
PH: 406.585.9535
FX: 406.585.9219

Custom Strips

Item	Reorder Number	Population	ATCC Number	Package Configuration
1 mm x 25 mm <i>B. atrophaeus</i>	A1X25/6	10x6	9372	100 per pkg, bulk
	A1X25/6G	10x6	9372	In Glassine, 100 per pkg
2 mm x 10 mm <i>B. atrophaeus</i>	A2X10/6	10x6	9372	100 per pkg, bulk
	A2X10/6G	10x6	9372	In Glassine, 100 per pkg
1 mm x 25 mm <i>G. stearothermophilus</i>	S1X25/6	10x6	7953	100 per pkg, bulk
	S1X25/6G	10x6	7953	In Glassine, 100 per pkg
2 mm x 10 mm <i>G. stearothermophilus</i>	S2X10/6	10x6	7953	100 per pkg, bulk
	S2X10/6G	10x6	7953	In Glassine, 100 per pkg
1 mm x 25 mm <i>B. Subtilis "5230"</i>	SU1X25/6	10x6	35021	100 per pkg, bulk

*Manufacturing fee applies

Population Assembly Kit

Item	Reorder Number	Package Configuration
Population Assay Glassware Only	PAK-G	4: 19.5mm x 145mm Sterile, flat bottom glass tubes w/ beads and cap
		12: 16mm x 125mm, sterile borosilicate dilution blank pipettes
		2: 5 ml pipettes
		8: 2 ml pipettes
		8: 1 ml pipettes
Media Only - 240 ml	PAK-M	TSA only



Pop Assembly Kit



Custom Strips

Mesa Laboratories, Inc.

www.MesaLabs.com
BI-support@mesalabs.com

Effective January 15th, 2018
Rev. 04DEC2017

Place Orders at:

bicustomerservice@mesalabs.com
PH: 406.585.9535
FX: 406.585.9219

Custom
Pop. Assembly

Custom
Pop. Assembly

Chemical Indicators - Steam

Item	Reorder Number	Classification	Package Configuration
ProChem SSW 510(k) Cleared	CI-SSW	Class 5	250 per box
ProChem EXT 510(k) Cleared	CI-EXT	Class 5	250 per box
ProChem SSE Steam Emulator 510(k) Cleared	CI-SSIX	Class 6	250 per box

Chemical Indicators - Dry Heat

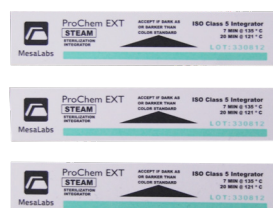
Item	Reorder Number	Classification	Package Configuration
Indicator Labels (Dry Heat) 510(k) at 160 °C	CI-DHI	Class 4	1,000 per roll

Bowie-Dick Type Tests w/ Lead Free Ink

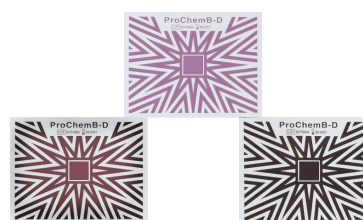
Item	Reorder Number	Process	Package Configuration
ProChem B-D Test Pack 510(k) Cleared for 3.5 min at 132 °C	CI-BDTLF	Steam	4 boxes/case (80 packs)
	CI-BDTLF20	Steam	20 packs/box



Dry Heat Indicator Labels
510(k) at 160 °C



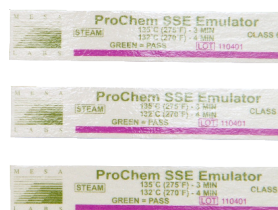
ProChem EXT
7 minutes at 135 °C /
20 minutes at 121 °C



ProChem BD Bowie-Dick Type Tests



ProChem SSW
115 - 138 °C

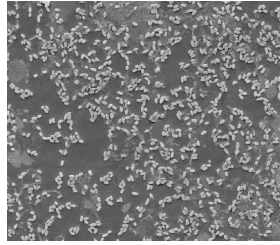
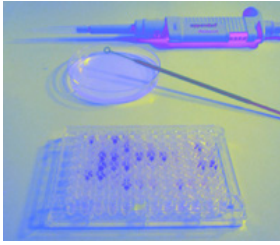


ProChem SSE
3 minutes at 135 °C /
4 minutes at 132 °C

Chemical Indicators

Chemical Indicators

Mesa Labs offers Steam and EO D-value or Survival/Kill testing in state-of-the-art BIER Vessels. D-value procedures used follow USP/ISO and can be obtained via Spearman Karber (fraction negative) method, Survivor Curve (direct enumeration) or with Stumbo-Murphy-Cochran. Mesa can inoculate and perform D-value analysis on small items (e.g. coupons or stoppers) or we can verify a competitor's claim for D-value, z-value and population. Isolate identification services available for most aerobic samples.



Testing on Prepared Biological Indicators

Item	Process
D-value - Survivor Curve or Spearman/Karber	Dry Heat
D-value - Survivor Curve or Spearman/Karber	Steam
D-value - Survivor Curve or Spearman/Karber	EO
USP Survival/Kill	Steam
USP Survival/Kill	EO
BI Culturing Fee \$5.35/BI, min 15 BI's	
Population Analysis*	Population Verification
	Individual Assays
	Pooled Assays
Microbial ID (Biology)	Non-pathogenic gram (+) rods

Population Verification Testing

Confirmation of labeled population on the Certificate of Analysis. Testing involves assaying four unexposed biological indicators individually per manufacturer or Mesa Lab procedures in adherence with ISO standards.

Single Assay

Population enumeration on individual exposed or unexposed biological indicators. Testing conducted per manufacture or Mesa Lab procedures.

Pooled Assay

Population enumeration on four pooled custom inoculated components and confirmation of labeled population on the Certificate of Analysis for MagnaAmp, SterilAmp, and ProSpore 4mL Biological Indicators. Testing performed according to Mesa Lab procedures.

Additional services available from Mesa, call for a quotation:

- Steam D-value on a commercially prepared BI
- EO D-value on a commercially prepared BI
- Population analysis of a commercially prepared BI
- Inoculation of client provided coupon or solution
- Custom filled ampoules
- Organism Identification (Biolog)